



SaierNico Electric & Automation

An aerial photograph of a large industrial complex. The complex consists of several large, rectangular buildings with flat roofs, some featuring grid patterns. A parking lot with several cars is visible in the foreground. The surrounding area is filled with trees and a road with more cars is visible on the right side.

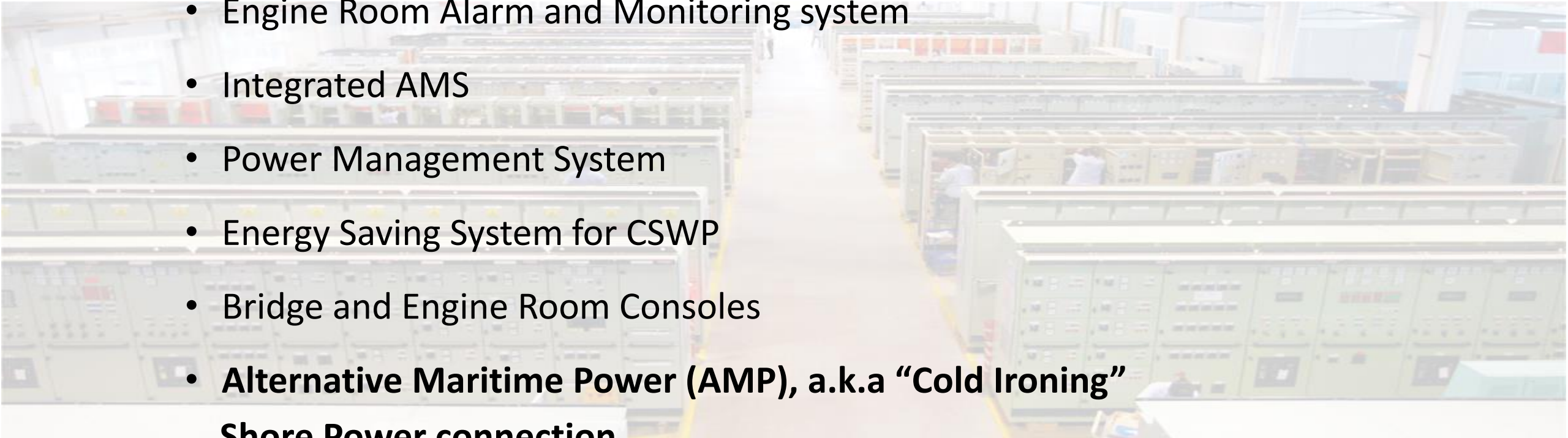
- Set-up in 1994
- 100% privately-owned Chinese company
- **700** employees
- More than **38,000m²** factory
- Equipment delivered for **more than 4500 Newbuilding vessels**

Main Products



Main Products

- Low & Medium Voltage switchboards
- Engine Room Alarm and Monitoring system
- Integrated AMS
- Power Management System
- Energy Saving System for CSWP
- Bridge and Engine Room Consoles
- **Alternative Maritime Power (AMP), a.k.a “Cold Ironing”**
Shore Power connection



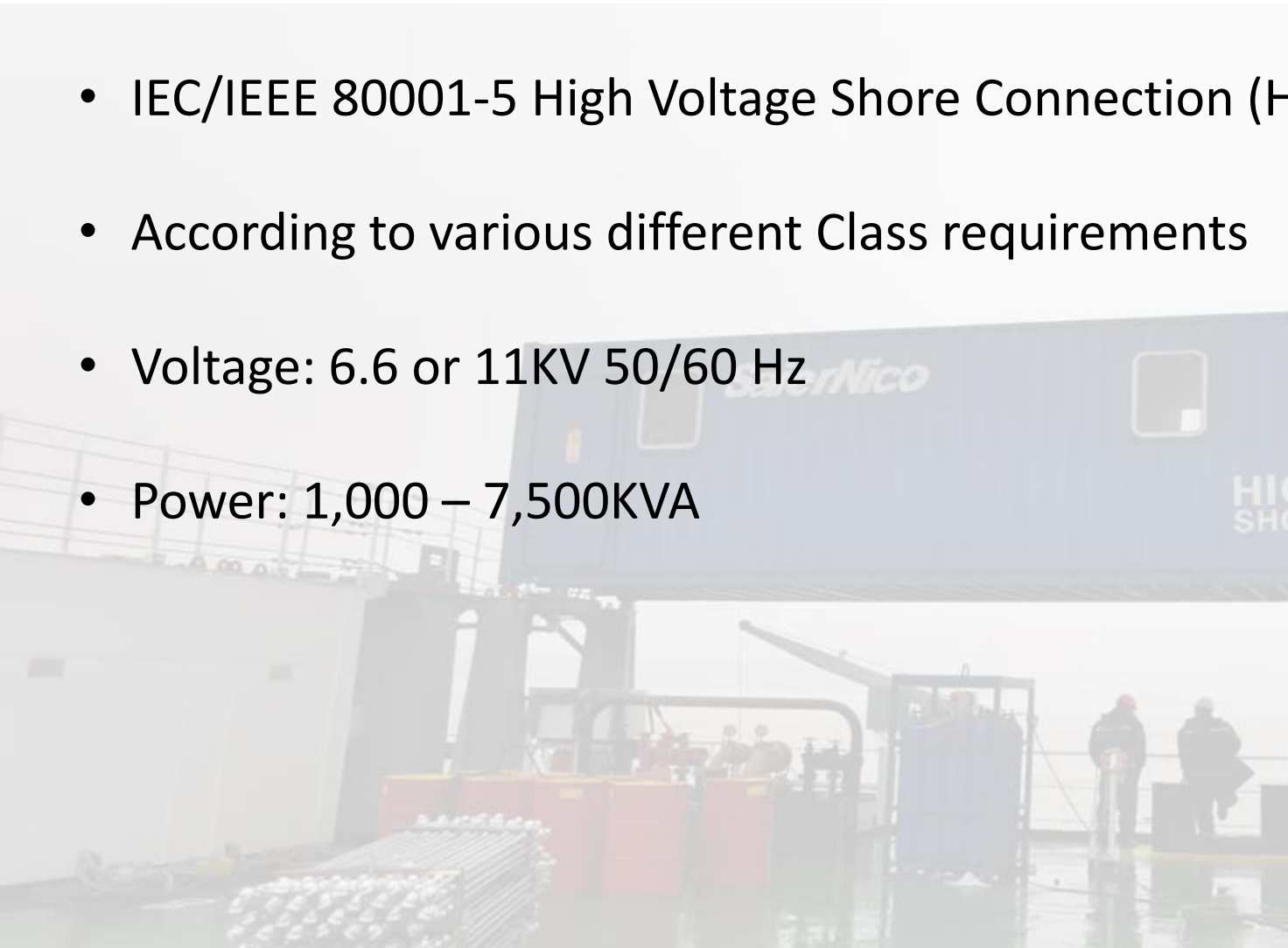
Alternative Maritime Power (AMP) Shore Power connection

Why AMP ?

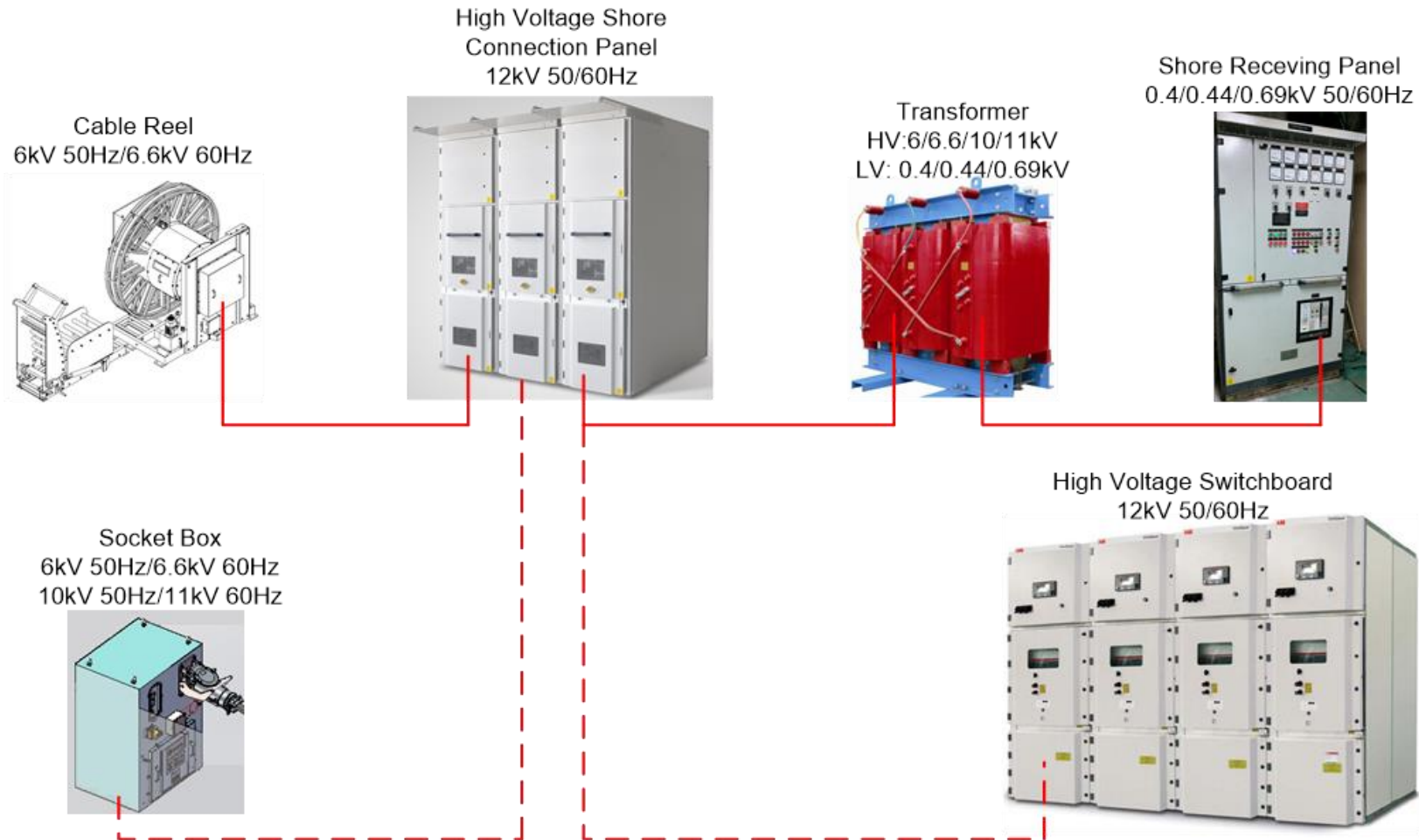
- **Regulations**: Prohibiting Aux. Engines' operation at port (for specific areas/vessel types)
 - ✓ **US (CARB)** : Container, Passenger & Reefer vsls, since 2014. Expanding to Tankers & RoRos from 01/01/2025.
 - ✓ **EU "FuelEU Maritime Initiative"**: Container and Passenger vessels from 2030 onwards
- Potentially Lower cost of energy (KWh) from harbour (considering also Carbon Tax, EU ETS, etc)
- Public health protection for nearby port communities & better for the Environment
- Reducing CO2 emissions (renewables'-derived port electricity), hence also improving CII

Standards/Rules

- IEC/IEEE 80001-5 High Voltage Shore Connection (HVSC)
- According to various different Class requirements
- Voltage: 6.6 or 11KV 50/60 Hz
- Power: 1,000 – 7,500KVA



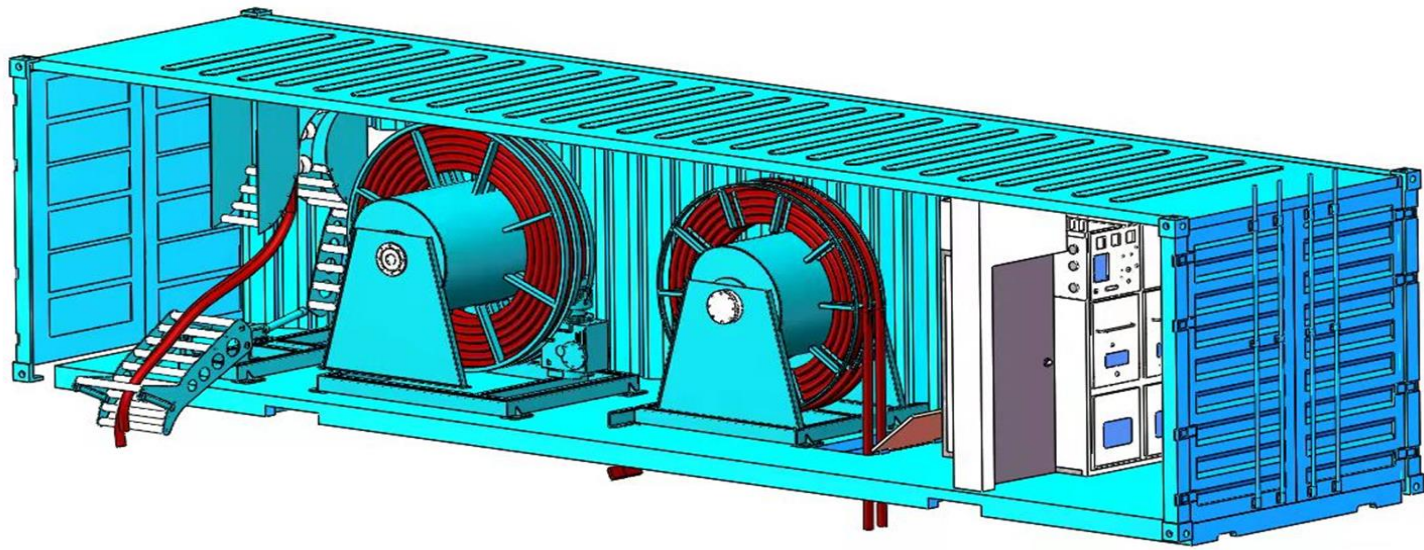
Alternative Maritime Power (AMP) Shore Power connection



AMP Container



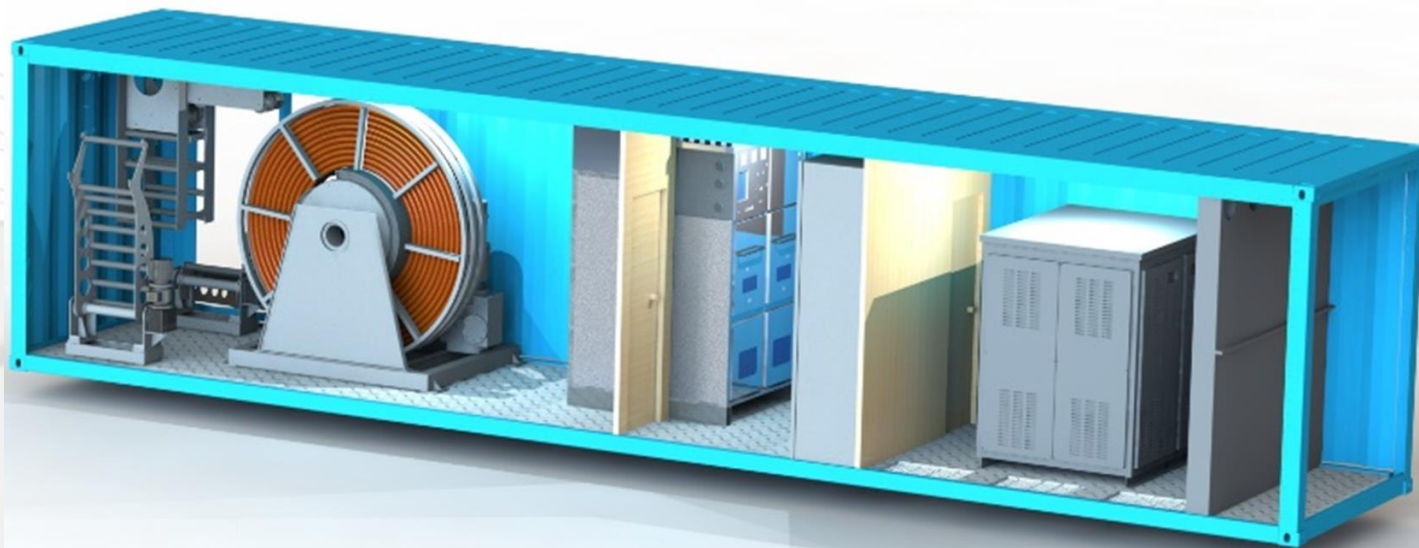
AMP Container with HV Output



Built-in components:

- AMP Cable Reel (cable length up to 55m)
- High Voltage Shore Connection Switchboard
- Control and Monitoring Panel
- Fire Detection System
- Fire Extinguisher
- Lighting
- Heating
- Cooling System (optional)

AMP Container with LV Output



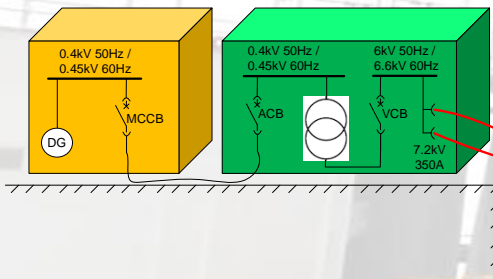
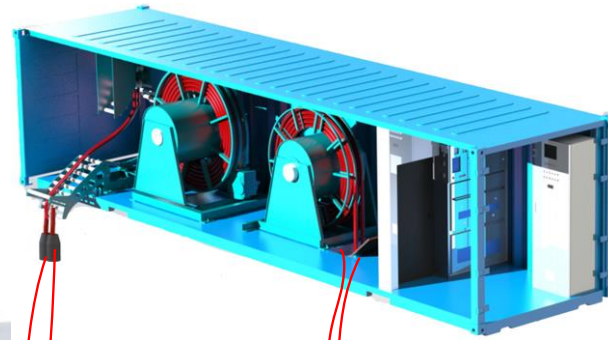
Built-in components:

- AMP Cable Reel (cable length up to 55m)
- High Voltage Shore Connection Switchboard
- Control and Monitoring Panel
- Fire Detection System
- Fire Extinguisher
- Lighting
- Heating
- Storage Cable Reel

Test of AMP Container

SaierNico AMP Test Facility:

- 2 sets AMP Test Facility
- 6,6KV/50Hz and 6.6KV/60Hz
- Power capacity up to 500KW
- 2 pcs. 7,2KV 350A, IEC standard sockets



AMP References, SaierNico



AMP References, SaierNico

Delivered for more than 150 vessels

Indicative below:

- 6,6KV, 2200KVA AMP equipment for Moby Line (RoPax vessel)
- 11KV, 3500KVA AMP for Finnlines (RoRo vessel)
- 6,6KV, 1500KVA AMP for Wallenius Marine (RoRo vessel)
- 6,6KV, 1875KVA AMP for Furetank (Chemical tanker)
- 6,6KV AMP for Peter Döhle (Container Vessel)
- 6.6KV AMP container for 15,000TEU container vessel for CMA CGM

Your AMP supplier



Your AMP supplier

Thank you for your attention

For more information: www.saiernico.com

Agent in Greece and Cyprus :

